



NDIS SDA Housing Solutions

Championing inclusive living with safer, more comfortable and easier to access homes.

There are around 4.4 million Australians who have a disability⁽¹⁾, and for many, the National Disability Insurance Scheme (NDIS) represents a life-changing opportunity. The NDIS provides over 500,000 Australians who have permanent or significant disabilities with funding for essential supports and services they need to live more independently and comfortably. At Galvin Engineering, we understand the importance of safe, accessible, and purpose-built housing in achieving this. Through our expertise in designing and delivering high-quality tapware, sanitaryware, and plumbing solutions, we are committed to helping create Specialist Disability Accommodation (SDA) that empowers individuals and enhances their quality of life.



National Disability Insurance Scheme (NDIS)

The NDIS is an Australian government initiative aimed at providing support and services to people with disabilities. The primary goal of the NDIS is to empower people with disabilities to lead more independent lives and participate fully in their communities.

The scheme aims to provide a person-centred approach, tailoring support to the specific needs and goals of each individual.

NDIS plans allocate funding across various categories, allowing participants to choose service providers and manage their funds independently. The flexibility of the scheme enables individuals to direct their support toward daily living, community participation, education, and more.

Specialist Disability Accommodation (SDA)

Specialist Disability Accommodation (SDA) is a specific category of support within the Australian National Disability Insurance Scheme (NDIS).

SDA refers to accommodation for people with very high or complex support needs who require specialised housing solutions that cater to their disabilities.

The primary purpose of SDA is to provide suitable housing that incorporates features, design, and technology to enhance the independence and quality of life for individuals with significant disabilities.

SDA operates with separate funding from other NDIS support categories, solely allocated for housing needs, and is delivered by registered providers meeting stringent quality and safety standards.

NDIS SDA Design Standard & National Construction Code (NCC)

The National Construction Code (NCC) sets out the minimum construction requirements for all new building work in Australia. The dwelling is required to comply with all applicable requirements of the NCC, including but not limited to waterproofing and termite protection measures.

Apart from the spatial requirements as noted in this NDIS SDA Design Standard, where there is a conflict between the NCC and the NDIS SDA Design Standard, the NCC takes precedence⁽²⁾.

⁽²⁾ NDIS Specialist Disability Accommodation Design Standard. Edition 1.1 Issue Date 25th October 2019

How can Galvin Engineering help?

Our aesthetically pleasing anti-ligature and vandal resistant products are designed to reflect the new vision and philosophy of hope, healing, and recovery. Placing a strong emphasis on home like, non-institutional, and patient-centred environments they assist in improving health outcomes through familiarity, and a sense of being valued while protecting residents and caregivers.

With the safety of both residents and caregivers at the forefront, our safe and easy to use NDIS SDA tapware and sanitaryware not only assists residents in carrying out more tasks independently but also reduces mental and physical stress of assisted tasks ensuring a more comfortable experience for residents and caregivers.

Galvin Engineering can offer full room bathroom solutions for NDIS SDA environments. Our range includes tapware, showers, thermostatically controlled solutions through to solid surface sanitaryware, grab rails, mirrors, drinking solutions and drainage products.

⁽¹⁾ People with disability in Australia, 23rd April 2024: <https://www.aihw.gov.au/reports/disability/people-with-disability-in-australia/contents/summary#HowMany>

Robust Housing

Robust houses are specially designed and constructed homes that prioritise high levels of physical accessibility and durability. These homes are built to withstand various challenges, reducing the need for frequent maintenance and ensuring the safety and independence of residents. By providing a secure and resilient living environment, robust housing supports the well-being of both its occupants and the broader community.

Robust Housing General Design Features

Designing strong homes involves using durable materials and robust structures that can withstand different conditions. Key aspects include weather-resistant features, energy efficiency, and sustainability. Homes should be adaptable to changing needs, safe, and accessible. Consideration for natural light, local climate, and community integration contributes to overall resilience. The focus is on low-maintenance, energy-efficient designs that prioritise both structural strength and environmental consciousness, creating homes that last and enhance the well-being of residents and the community.

This includes:

- Durable Materials and Robust Fixtures
- Curated Colours and Interior
- Sensory Sound Proofing
- Increased Safety Measures
- Reinforced Walls, Doors and Safety Glass Windows

Robust Housing Tapware and Sanitaryware

In designing a robust home, attention to tapware and sanitaryware involves prioritising durability, functionality, and water efficiency. The selection of materials, such as stainless steel or brass, emphasises longevity and resistance to corrosion. Water-efficient features, like low-flow technology, are considered to promote sustainability. Additionally, a focus on easy maintenance is maintained, with designs that facilitate straightforward cleaning. Ensuring adaptability and accessibility, such as incorporating lever handles and strategically placed grab bars, caters to diverse user needs.

The cohesive integration of style and aesthetics is important, ensuring that tapware and sanitaryware complement the overall design of the home. Consistency in design and finish throughout the house contributes to a unified and visually pleasing environment. Exploring smart technologies, like touchless faucets and sensor-controlled toilets, adds modern functionality and promotes hygiene.



Design Standards Category Key

The Specialist Disability Accommodation (SDA) Design Standards consists of four Design Categories that design requirements relate to throughout the standard. For consistency, these four categories have been utilised throughout this brochure to assist with identifying which design categories apply to our products.

Improved Livability

Housing that has been designed to improve 'Livability' by incorporating a reasonable level of physical access and enhanced provision for people with sensory, intellectual or cognitive impairment.

Fully Accessible

Housing that has been designed to incorporate a high level of physical access provision for people with significant physical impairment or high support needs.

Robust

Housing that has been designed to incorporate a reasonable level of physical access provision and be very resilient, reducing the likelihood of reactive maintenance and reducing the risk to the both the residents and the community.

High Physical Support

Housing that has been designed to incorporate a high level of physical access provision for people with significant physical impairment and require very high levels of support.

Tapware

Our NDIS SDA housing-specific tapware are designed to enhance usability and accessibility with a variety of options including accessible, sensor, and anti-ligature design.

 Improved Livability
  Fully Accessible
  Robust
  High Physical Support



GalvinAssist® CP Lead Safe™ Basin Mixer with Long Paddle Handle W&C

Product Code: 113.42.20.04



CliniLever® Stainless Steel Lead Safe™ Basin Mixer with Accessible Lever

Product Code: TM-BASXD



Flowmatic® Lead Safe™ GC20 Hob Basin Tap - Mains Power

Product Code: 151.10.12.00



CliniLever® CP-BS Lead Safe™ Basin Set with Fixed 150mm Outlet 150 C/D

Product Code: 102.13.21.03



GalvinCare® CP-BS Lead Safe™ Anti-Ligature Wall Outlet 15 FI

Product Code: 121.41.40.00



GalvinCare® CP-BS Lead Safe™ Anti-Ligature Paddle Handle WTA 1/4 Turn C/D - Hot & Cold

Product Code: 120.71.16.01 & 120.71.16.02



CliniMix® Lead Safe™ CMV2 Wall Mtd Handsfree POU, Wave On/Off, Chrome Face Plate

Product Code: 100.41.10.20



CliniMix® CMV2 Wall Mtd Handsfree POU, Proximity, Mains, CP Face Plate with Anti-Ligature Outlet

Product Code: 100.81.20.20



Safe-Cell® CP-BS Lead Safe™ Ezy-Grip Wall Top Assembly Complete C/D - Hot & Cold

Product Code: 121.01.03.01 & 121.01.03.02





CliniMix® Lead Safe™ Inwall Thermostatic Progressive Mixer with GalvinCare® Handle - Warm & Cold

Product Code: 100.50.75.01

Basins

Our range of NDIS SDA housing-specific basins offer various activation options to accommodate diverse risk levels. These basins are designed with features such as anti-ligature properties, robust construction, and minimum depth requirements, ensuring a secure and adaptable solution.

 Improved Livability
  Fully Accessible
  Robust
  High Physical Support



HEWI Dementia Wall Hung Wash Basin 600mm x 550mm 1TH White with Ruby Red Handles

Product Code: 950.11.106



Wallgate DDA Compliant Hand Basin Solid Surface - Front Fixed RH Tap Hole + Shroud

Product Code: SHB-04-RT & SHBS04



Wallgate Anti-Ligature, Anti-Vandal Solid Surface Basin with Single Outlet 0TH

Product Code: WHB-201W-NB-AUS



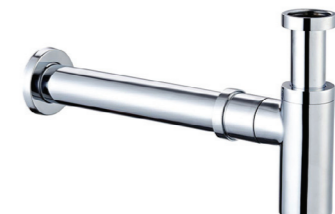
Wallgate Anti-Vandal Solid Surface Wash Basin Back to Wall Waste Concealed Services 0TH

Product Code: WHB-100W



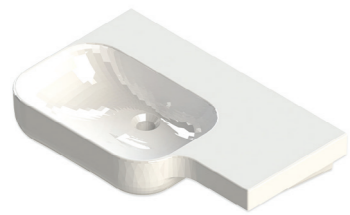
GalvinAssist® 500mm Wall Basin Type C without Overflow 1TH + Shroud

Product Code: 106.30.20.03 & 106.30.20.08



GalvinAssist® Chrome, Round Bottle Trap, Wall Exit, Suits 32mm & 40mm Waste Holes

Product Code: 105.93.00.00



GalvinAssist® 720mm Access Wall Basin LH Bowl No Overflow 0TH

Product Code: 105.30.71.01



Wallgate Anti-Lig, Anti-Vandal S/Surface Front Fixed Basin with LH Shelf Integral Outlet 0TH

Product Code: WHBV-101W-LH-NB



Kolo Rekord 600mm Wall Basin Type B without Overflow 1TH + Shroud

Product Code: K91460000 + K97101000







Wallgate Undermount Vanity Bowl Only Solid Surface with No Overflow 426 x 344mm

Product Code: VBU-01-NOFW

Toilets

Our NDIS SDA housing-specific toilets feature a robust selection of anti-vandal, anti-ligature solid surface pans. With a focus on durability and safety, these toilets are designed to meet the unique requirements of secure environments, ensuring both resilience and risk mitigation.

 Improved Livability
  Fully Accessible
  Robust
  High Physical Support



Wallgate Anti-Ligature, Anti-Vandal S/Surface Accessible Pan S&P with Grey Integrated Seat 460x810 - Rear Fixed

Product Code: CWC-155W-AST-BCA



Wallgate Anti-Ligature, Anti-Vandal S/Surface Pan S&P with Grey Integrated Seat 446x702 - Rear Fixed

Product Code: CWC-155W-AST-AUS



GalvinAssist® Wall Faced, Clean Flush, Easy Care, Ambulant Toilet Suite with Soft Close Seat

Product Code: 105.10.20.00



GalvinAssist® Wall Faced, Clean Flush, Easy Care Toilet Suite with Soft Close Seat

Product Code: 105.10.00.00



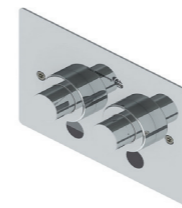
GalvinAssist® Wall Faced, Clean Flush, Easy Care, Toilet Pan with Soft Close Seat

Product Code: 105.11.00.00



SS Vandal Resistant Dual Flush Plate Assembly for Pneumatic Inwall Cisterns

Product Code: 656510



SS Vandal Resistant Dual Flush Plate Assembly for Pneumatic Inwall Cistern with CP-BS Raised Buttons

Product Code: 656512



SS Vandal Resistant Dual Flush Plate Assembly for Pneumatic Inwall Cistern with CP-BS Flush Buttons

Product Code: 656507



Wallgate Pneumatic Activated Concealed Slimline Cistern

Product Code: CIST19-PNEU-2






GalvinAssist® PWD Backrest

Product Code: 105.76.02.01

Showers

Our NDIS SDA housing-specific showers feature sturdy and height-adjustable shower heads, coupled with lever and anti-ligature tapware options, ensuring adaptability and accessibility for users.

-  Improved Livability
-  Fully Accessible
-  Robust
-  High Physical Support



GalvinCare® CP-BS Lead Safe™ Anti-Ligature Wall Mtd Shower Rose 65

Product Code: 121.33.64.00



GalvinCare® CP-BS Lead Safe™ Vandal Resistant Ezy-Grip Shower Set C/D

Product Code: 121.51.13.03



GalvinAssist® CP Hand Shower Kit with 900 x 32mm SS Hygienic Grab Rail

Product Code: 41999CP



GalvinAssist® Hand Shower with Inverted T 700 x 1100mm SS Hygienic Grab Rail (Centre)

Product Code: 41978CP



GalvinAssist® CP Lead Safe™ Shower Mixer Set with Short Paddle Handle W&C

Product Code: 113.62.10.04



CliniLever® Stainless Steel Lead Safe™ Shower / Bath Mixer

Product Code: TM-SHWX



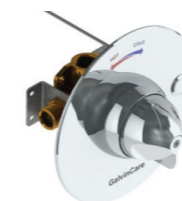
GalvinCare® CP-BS Lead Safe™ Anti-Ligature Safe-Connect Shower Head & Hand Shower

Product Code: 121.36.64.92



GalvinCare® CP-BS Lead Safe™ Inwall Progressive Anti-Ligature Shower Mixer (Non TMV) Warm & Cold

Product Code: 120.52.11.04



GalvinCare® Electronic Concealed Shower Mixer with Handle & Controller

Product Code: TZ-FLOWTMSHWINR



GalvinAssist® 960 x 400 x 480mm Folding Shower Seat

Product Code: 105.70.09.01

Drains

Our range of NDIS SDA housing-specific drains include options that help mitigate the risks of self-harm, suicide, and contraband concealment, prioritising safety and wellbeing.

 Improved Livability
  Fully Accessible
  Robust
  High Physical Support



HeelGrate® SS Floor Drain Vinyl Round 150 x 100 with SS Body PVC/HDPE/CU Slip-In

Product Code: 303185X



Slip-Safe® SS Bolted Cleanout Round Vinyl 150 x 100 PVC/HDPE/CU Slip-In

Product Code: 69468X



HeelGrate® SS316 Floor Drain Grate Round 150 x 100 PVC/HDPE/CU Slip-In

Product Code: 302185X



Slip-Safe® SS316 Bolted Cleanout Round 150 x 100 PVC/HDPE/CU Slip-In

Product Code: 67790X



HeelGrate® SS316 Floor Drain Grate Round 100 x 80 PVC Slip-In

Product Code: 302182X



SS Floor Drain Grate Vinyl 100 x 80 PVC Slip-In

Product Code: 303176X



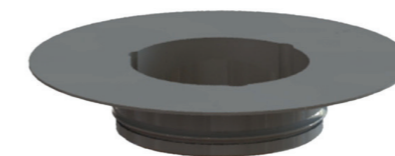
Safe-Cell® Polished SS316 (CRR) Prison Floor Drain Vinyl 100 x 80 BSP

Product Code: 303077X



Safe-Cell® Polished SS316 (CRR) Prison Floor Drain Round 100 x 80 BSP

Product Code: 303070X



PPR Floor Drain Adaptor Ring 80BSP FI x 100 PVC/HDPE Slip-in

Product Code: 302168



HeelGrate® SS316 Floor Drain Grate Square 150 x 100 PVC/HDPE/CU Slip-In

Product Code: 302505X

Accessories

Our range of accessories have been developed to complement our sanitaryware products. The anti-ligature accessories range includes: mirrors, shelves, toilet-roll holders, grab rails and other washroom products.



Wallgate Anti-Ligature, Anti-Vandal Recessed Toilet Roll Holder Solid Surface White

Product Code: TRH-04



HEWI Toilet Roll Holder - Signal White

Product Code: 477.21.100.98



HEWI LED Illuminated Mirror 570mm Wide x 1000mm High Warm White

Product Code: 950.01.11101



Wallgate Anti-Ligature, Anti-Vandal Polycarb Mirror with Solid Surface Surround Front Fixed 250 x 350 - White

Product Code: ALM-02FF-W



GalvinCare® Anti-Ligature Single Robe/Towel Hook

Product Code: THK-01



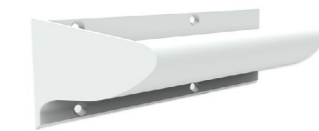
HEWI Single Hook DIA=50mm - Signal White

Product Code: 477.90.010.98



GalvinCare® Mental Health Anti-Ligature 90° Grab Rail 700 x 950mm Powder Coated - Vert

Product Code: 42290, 42294



GalvinCare® Mental Health Anti-Ligature Grab Rail 300mm Powder Coated - Vert or Horiz (LH/RH)

Product Code: 42200, 42207



Wallgate Anti-Ligature, Anti-Vandal Recessed Shower Shelf Solid Surface White

Product Code: ALF-04



GalvinCare® Anti-Ligature Solid Surface Recessed Washroom Shelf 500 x 200 x 125

Product Code: 42100



GalvinAssist® Straight Grab Rail Stainless Steel (300mm, 900mm)

Product Code: 105.00.00.01, 105.00.09.01






GalvinAssist® Angled 450 x 450mm Grab Rail

Product Code: 105.07.23.01

	Product Code	Product Description	Improved Living	Fully Accessible	Robust	High Physical Support
Tapware	100.41.10.20	CliniMix® Lead Safe™ CMV2 Wall Mtd Handsfree POU, Wave On/Off, Chrome Face Plate				
	100.81.20.20	CliniMix® CMV2 Wall Mtd Handsfree POU, Proximity, CP Face Plate with Anti-Ligature Outlet				
	113.42.20.04	GalvinAssist® CP Lead Safe™ Basin Mixer with Long Paddle Handle W&C				
	TM-BASXD	CliniLever® Stainless Steel Lead Safe™ Basin Mixer with Accessible Lever				
	TZ-FLOWHOBSP	Flowmatic® Hob Basin Tap Single Temperature - Mains Powered				
	102.13.21.03	CliniLever® CP-BS Lead Safe™ Basin Set with Fixed 150mm Outlet 150 C/D				
	121.41.40.00	GalvinCare® CP-BS Lead Safe™ Anti-Ligature Wall Outlet 15 Fl				
	120.71.16.01	GalvinCare® CP-BS Lead Safe™ Anti-Ligature Paddle Handle WTA 1/4 Turn C/D - Cold				
	120.71.16.02	GalvinCare® CP-BS Lead Safe™ Anti-Ligature Paddle Handle WTA 1/4 Turn C/D - Hot				
	121.01.03.01	Safe-Cell® CP-BS Lead Safe™ Ezy-Grip Wall Top Assembly Complete C/D - Cold				
	121.01.03.02	Safe-Cell® CP-BS Lead Safe™ Ezy-Grip Wall Top Assembly Complete C/D - Hot				
	100.50.75.01	CliniMix® Lead Safe™ Inwall Thermostatic Progressive Mixer with Handle - Warm & Cold				
Basins	105.30.71.01	GalvinAssist® 720mm Access Wall Basin 0TH LH Bowl No Overflow - White				
	WHBV-101W-LH-NB	Wallgate Anti-Ligature, Anti-Vandal Solid Surface Front Fixed Basin, LH Shelf Integral Outlet 0TH				
	950.11.106	HEWI Dementia Wall Hung Wash Basin 600mm x 550mm 1TH White with Ruby Red Handles				
	SHB-04-RT	Wallgate DDA Compliant Hand Basin Solid Surface - Front Fixed RH Tap Hole				
	SHBS04	Wallgate Full Shroud Only for SHB-04 DDA Wall Mount Basin				
	WHB-201W-NB-AUS	Wallgate Anti-Ligature, Anti-Vandal Solid Surface Basin with Single Out No Tap Holes				
	WHB-100W	Wallgate Anti-Vandal Solid Surface Wash Basin, Back to Wall Waste Concealed - White				
	106.30.20.03	GalvinAssist® Wall Basin 500mm 1TH No Overflow Type C White				
	106.30.20.08	GalvinAssist® Wall Basin Shroud Only White Type C & B Basins				
	105.93.00.00	GalvinAssist® Chrome, Round Bottle Trap, Wall Exit, Suits 32mm & 40mm Waste Holes				
	K91460000	Kolo Rekord Wall Basin 600mm Type B without Overflow 1TH				
	K97101000	Kolo Rekord Basin Shroud				
	VBU-01-NOFW	Wallgate Undermount Vanity Bowl Only Solid Surface with No Overflow, 426 x 344mm				
Toilets	CWC-155W-AST-BCA	Wallgate Anti-Ligature, Anti-Vandal Accessible Solid Surface BTW Pan S&P with Grey Seat 460 x 810				
	CWC-155W-AST-AUS	Wallgate Anti-Ligature, Anti-Vandal Solid Surface BTW Pan S&P with Grey Seat 446 x 702				
	105.10.20.00	GalvinAssist® Wall Faced, Clean Flush, Easy Care, Ambulant Toilet Suite with Soft Close Seat				
	105.10.00.00	GalvinAssist® Wall Faced, Clean Flush, Easy Care Toilet Suite with Soft Close Seat				
	105.11.00.00	GalvinAssist® Wall Faced, Clean Flush, Easy Care, Toilet Pan with Soft Close Seat				
	656510	SS Vandal Resistant Dual Flush Plate Assembly for Pneumatic Inwall Cisterns				
	656512	SS Vandal Resistant Dual Flush Plate for Pneumatic Inwall Cistern with CP-BS Raised Buttons				
	656507	SS Vandal Resistant Dual Flush Plate for Pneumatic Inwall Cistern with CP-BS Flush Buttons				
	CIST19-PNEU-2	Wallgate Pneumatic Activated Concealed Slimline Cistern				
	105.76.02.01	GalvinAssist® PWD Backrest				

	Product Code	Product Description	Improved Living	Fully Accessible	Robust	High Physical Support
Showers	121.36.64.92	GalvinCare® CP-BS Lead Safe™ Anti-Ligature Safe-Connect Shower Head & Hand Shower				
	120.52.11.04	GalvinCare® CP-BS Lead Safe™ Inwall Progressive Anti-Ligature Shower Mixer (Non TMV) W&C				
	121.33.64.00	GalvinCare® CP-BS Lead Safe™ Anti-Ligature Wall Mtd Shower Rose 65				
	121.51.13.03	GalvinCare® CP-BS Lead Safe™ Vandal Resistant Ezy-Grip Shower Set C/D				
	41999CP	GalvinAssist® CP Hand Shower Kit with 900 x 32mm SS Hygienic Grab Rail				
	41978CP	GalvinAssist® Hand Shower with Inverted T 700 x 1100mm SS Hygienic Grab Rail (Centre)				
	113.62.10.04	GalvinAssist® CP Lead Safe™ Shower Mixer Set with Short Paddle Handle W&C				
	TM-SHWX	CliniLever® Stainless Steel Lead Safe™ Shower / Bath Mixer				
	TZ-FLOWTMSHWINR	GalvinCare® Electronic Concealed Shower Mixer with Handle & Controller				
	105.70.09.01	GalvinAssist® 960 x 400 x 480mm Folding Shower Seat				
Drains	303077X	Safe-Cell® Polished SS316 (CRR) Prison Floor Drain Vinyl 100 x 80 BSP				
	303070X	Safe-Cell® Polished SS316 (CRR) Prison Floor Drain Round 100 x 80 BSP				
	303185X	HeelGrate® SS Floor Drain Vinyl Round 150 x 100 with SS Body PVC/HDPE/CU Slip-In				
	69468X	Slip-Safe® SS Bolted Cleanout Round Vinyl 150 x 100 PVC/HDPE/CU Slip-In				
	302185X	HeelGrate® SS316 Floor Drain Grate Round 150 x 100 PVC/HDPE/CU Slip-In				
	67790X	Slip-Safe® SS316 Bolted Cleanout Round 150 x 100 PVC/HDPE/CU Slip-In				
	302182X	HeelGrate® SS316 Floor Drain Grate Round 100 x 80 PVC Slip-In				
	303176X	SS Floor Drain Grate Vinyl 100 x 80PVC Slip-In				
	302168	PPR Floor Drain Adaptor Ring 80 BSP FI x 100 PVC/HDPE Slip-in				
	302505X	HeelGrate® SS316 Floor Drain Grate Square 150 x 100 PVC/HDPE/CU Slip-In				
Accessories	TRH-04	Wallgate Anti-Ligature, Anti-Vandal Recessed Toilet Roll Holder Solid Surface White				
	477.21.100.98	HEWI Toilet Roll Holder - Signal White				
	THK-01	HeelGrate® SS316 Floor Drain Grate Round 100x80 PVC Slip-In				
	477.90.010.98	HEWI Single Hook DIA=50mm - Signal White				
	ALF-04	Wallgate Anti-Ligature, Anti-Vandal Recessed Shower Shelf Solid Surface White				
	42100	GalvinCare® Anti-Ligature Solid Surface Recessed Washroom Shelf 500 x 200 x 125				
	950.01.11101	HEWI LED Illuminated Mirror 570mm Wide x 1000mm High Warm White				
	ALM-02FF-W	Wallgate Anti-Ligature, Anti-Vandal Polycarb Mirror, Solid Surface Surround Front Fixed 250 x 350				
	42290	GalvinCare® Mental Health Anti-Ligature 90° Grab Rail 700 x 950mm Powder Coated - Vert/Horiz (LH)				
	42294	GalvinCare® Mental Health Anti-Ligature 90° Grab Rail 700 x 950mm Powder Coated - Vert/Horiz (RH)				
	42200	GalvinCare® Mental Health Anti-Ligature Grab Rail 300mm Powder Coated - Vert or Horiz (LH)				
	42207	GalvinCare® Mental Health Anti-Ligature Grab Rail 300mm Powder Coated - Vert or Horiz (RH)				
	105.00.00.01	GalvinAssist® SS Straight 300mm Grab Rail				
105.00.09.01	GalvinAssist® SS Straight 900mm Grab Rail					
105.07.23.01	GalvinAssist® Angled 450 x 450mm Grab Rail					

We design, manufacture and supply safe, green and smart water solutions for high risk and high care environments.

 1300 514 074
 sales@galvinengineering.com.au
 galvinengineering.com.au

- Australia
- New Zealand
- UK
- USA

© CliniLever, CliniMix, GalvinAssist, GalvinCare, Flowmatic, HeelGrate, Safe-Cell, Slip-Safe, Galvin Engineering, Galvin Specialised, Safe-Cell, Slip Safe All rights reserved. TM Lead Safe. © Galvin Engineering Pty Ltd



Whilst all reasonable care has been taken in compiling the information in this document, the designs, dimensions and products shown are indicative only and should not be relied upon without prior approval. Due to our policy of continuous development, we reserve the right to alter any details of specifications or products without notice. All information, drawings, technical specifications and product designs remains the property of Galvin Engineering Pty Ltd.

In the absence of a legal or industry definition of anti-ligature or ligature resistant products, when we use these terms, we are referring to products that are designed and manufactured with the intention of reducing the risk of ligature attachment to the product(s).

Galvin Engineering Pty Ltd will always endeavour to design and test our anti-ligature product(s) to reduce the risk of product ligature attachment that may result in serious injury or death. Whilst all reasonable measures are taken at the time of design, the anti-ligature design of the products are not intended to and will not: a. Replace protective measures that need to be taken in the specific circumstances of usage; b. Substitute the need for supervision of those who may be at risk; c. Protect and or prevent those at risk against any self-harm instances that may occur when installed; and d. Protect and or prevent injury when the risks were unknown to us at the time of the design of the product(s).

Galvin Engineering Pty Ltd does not offer and does not represent or warrant that any product(s) for sale are ligature-free. Therefore, Galvin Engineering will not be liable for any claims, loss, or damages arising from ligature attachment on our products. It is the purchaser's responsibility to ensure that products purchased and installed are suitable for the environments in which they are installed, and suitable supervision and protective measures are in place to protect those at risk.

